

BACHELOR OF SCIENCE IN ELECTRICAL ENGINEERING 2018-2019
 ELECTRICAL ENGINEERING PROGRAM (126 CREDITS)

LAST NAME _____ FIRST _____ MIDDLE _____ STUDENT NUMBER _____
 Email: _____ Phone: _____ Native Language: _____

FRESHMAN YEAR

Initial	Substitute	Course	14 Cr	Semester	Grade
		ECE 111	3		
		ENG 105	3		
		MTH 151	5		
		PHY 205	3		

Initial	Substitute	Course	16 Cr	Semester	Grade
		ECE 112	2		
		ECE 118	3		
		ENG 107	3		
		MTH 162	4		
		PHY 206	3		
		PHY 208	1		

SOPHOMORE YEAR

Initial	Substitute	Course	16 Cr	Semester	Grade
		ECE 201	3		
		ECE 218	3		
		MTH 311	3		
		PHY 207	3		
		PHY 209	1		
		HA Cognate	3		

Initial	Substitute	Course	17 Cr	Semester	Grade
		ECE 202	3		
		ECE 203	1		
		ECE 206	3		
		ECE 211	3		
		MTH 201	3		
		CHM 151	3		
		CHM 153	1		

JUNIOR YEAR

Initial	Substitute	Course	17 Cr	Semester	Grade
		ECE 301	3		
		ECE 302	3		
		ECE 303	1		
		ECE 315	1		
		ECE 336	3		
		ECE/EN 310	3		
		PS Cognate	3		

Initial	Substitute	Course	16 Cr	Semester	Grade
		ECE 212	3		
		ECE 316	1		
		EE Core	3		
		EE Core	3		
		ECE Elec.	3		
		PS Cognate	3		

SENIOR YEAR

Initial	Substitute	Course	16 Cr	Semester	Grade
		ECE 481	1		
		ECE Elec	3		
		ECE Elec	3		
		ECE Design	3		
		Tech. Elec.	3		
		PS Cognate	3		

Initial	Substitute	Course	14 Cr	Semester	Grade
		ECE 482	2		
		Tech. Elec.	3		
		Tech. Elec.	3		
		HA Cognate	3		
		HA Cognate	3		

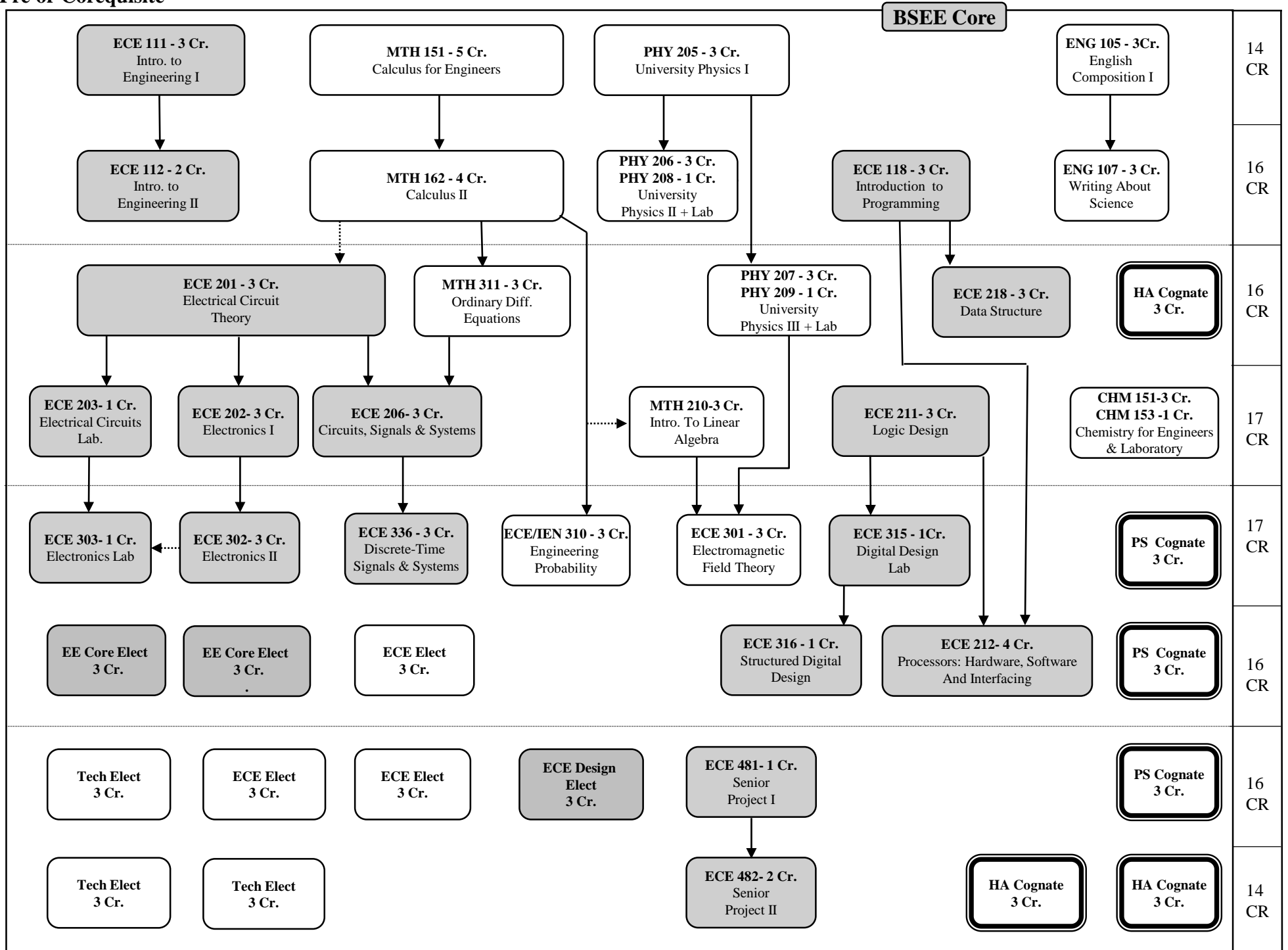
HA Cognate: _____
 PS Cognate: _____
 ADVISOR: _____

Writing 1) _____ 2) _____

Prerequisite \longrightarrow
Pre or Corequisite $\cdots\cdots\longrightarrow$

Recommended course sequence for the Electrical Engineering Option (EEN)

2018 – 19, Aug 2018



BSEE Core

ECE 111 - 3 Cr.
Intro. to
Engineering I

MTH 151 - 5 Cr.
Calculus for Engineers

PHY 205 - 3 Cr.
University Physics I

ENG 105 - 3Cr.
English
Composition I

14
CR

ECE 112 - 2 Cr.
Intro. to
Engineering II

MTH 162 - 4 Cr.
Calculus II

PHY 206 - 3 Cr.
PHY 208 - 1 Cr.
University
Physics II + Lab

ECE 118 - 3 Cr.
Introduction to
Programming

ENG 107 - 3 Cr.
Writing About
Science

16
CR

ECE 201 - 3 Cr.
Electrical Circuit
Theory

MTH 311 - 3 Cr.
Ordinary Diff.
Equations

PHY 207 - 3 Cr.
PHY 209 - 1 Cr.
University
Physics III + Lab

ECE 218 - 3 Cr.
Data Structure

**HA Cognate
3 Cr.**

16
CR

ECE 203- 1 Cr.
Electrical Circuits
Lab.

ECE 202- 3 Cr.
Electronics I

ECE 206- 3 Cr.
Circuits, Signals & Systems

MTH 210-3 Cr.
Intro. To Linear
Algebra

ECE 211- 3 Cr.
Logic Design

CHM 151-3 Cr.
CHM 153-1 Cr.
Chemistry for Engineers
& Laboratory

17
CR

ECE 303- 1 Cr.
Electronics Lab

ECE 302- 3 Cr.
Electronics II

ECE 336 - 3 Cr.
Discrete-Time
Signals & Systems

ECE/IEN 310 - 3 Cr.
Engineering
Probability

ECE 301 - 3 Cr.
Electromagnetic
Field Theory

ECE 315 - 1Cr.
Digital Design
Lab

**PS Cognate
3 Cr.**

17
CR

EE Core Elect
3 Cr.

EE Core Elect
3 Cr.

ECE Elect
3 Cr.

ECE 316 - 1 Cr.
Structured Digital
Design

ECE 212- 4 Cr.
Processors: Hardware, Software
And Interfacing

**PS Cognate
3 Cr.**

16
CR

Tech Elect
3 Cr.

ECE Elect
3 Cr.

ECE Elect
3 Cr.

ECE Design
Elect
3 Cr.

ECE 481- 1 Cr.
Senior
Project I

**PS Cognate
3 Cr.**

16
CR

Tech Elect
3 Cr.

Tech Elect
3 Cr.

ECE 482- 2 Cr.
Senior
Project II

**HA Cognate
3 Cr.**

**HA Cognate
3 Cr.**

14
CR